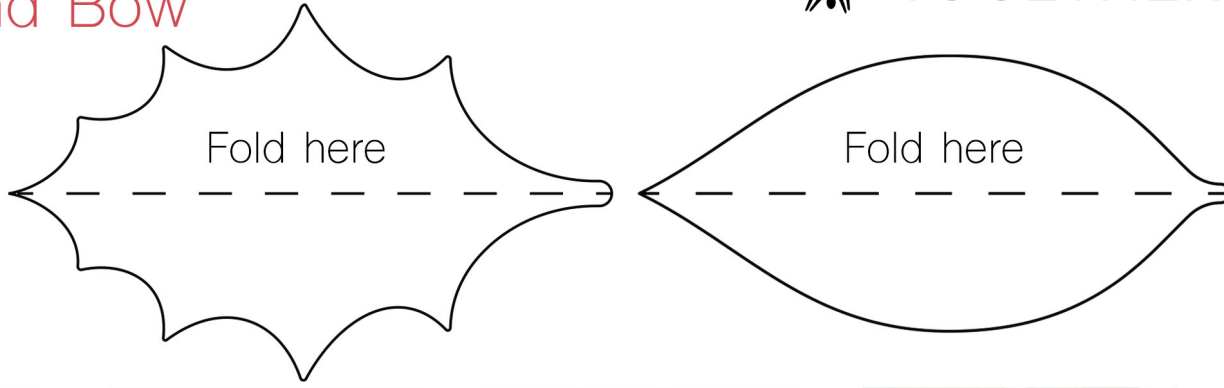


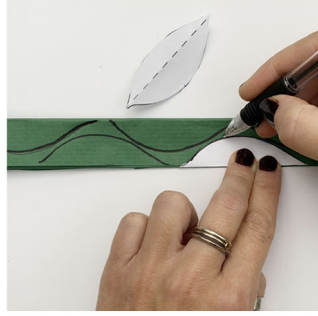
Paper Advent Wreath

Leaves and Bow

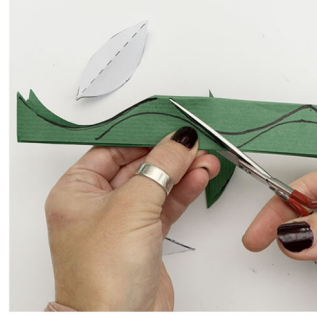
Holly and Bay Leaf



Concertina some paper twice. It should be about 5 cm wide.



Fold your template in half and trace along both sides.



Cut. You will be left with some half leaves.

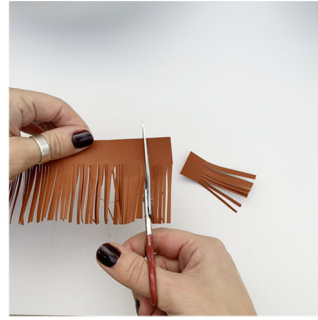


Try using a couple of different colours shapes and sizes.

Pine sprigs



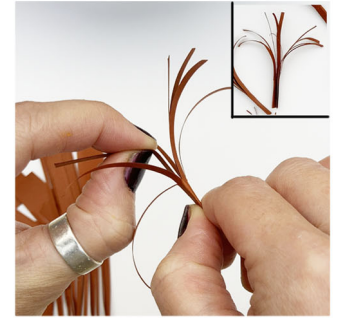
Using a 5cm strip of paper slice into it several times.



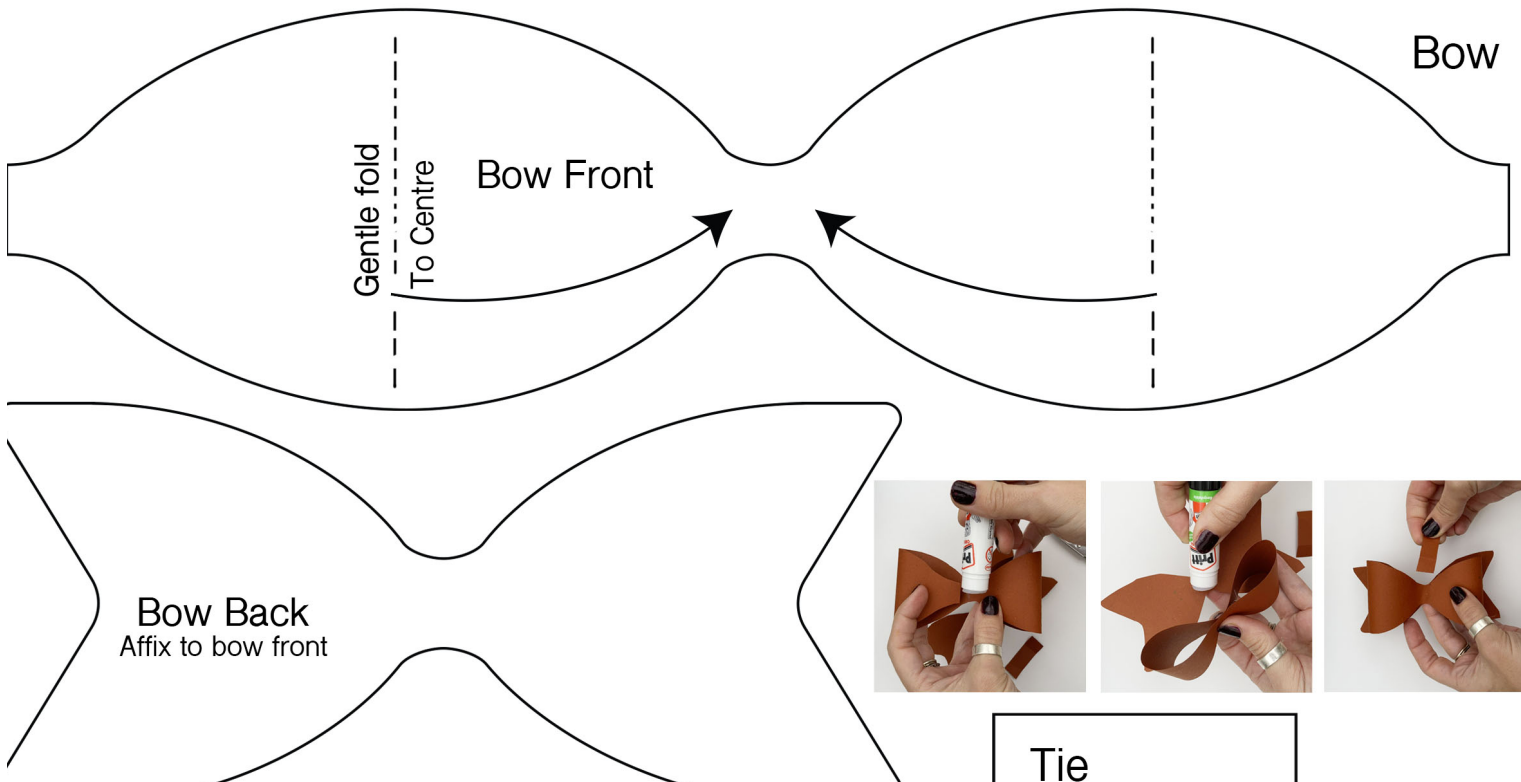
Cut into 2cm sections.



Glue the bottom and roll.



Pinch the sprigs to fan out.



Tie